

ptv vision

PTV Vision – Tutorial
VISUM 10 Quickstart



traffic mobility logistics.

Copyright:

© 2007 PTV AG, Karlsruhe

VISUM® is a trademark from PTV AG

PTV Vision® is a trademark from PTV AG

All brand or product names in this documentation are trademarks or registered trademarks of the corresponding companies or organisations. All rights reserved.

Disclaimer:

The information contained in this document is subject to change without notice and should not be construed as a commitment on the part of the vendor.

This document may not be used for any other purpose than the personal use of the purchaser. No part of this handbook may be reproduced, stored in a retrieval system, or transmitted, in any form, or by any means, electronic, mechanical, photocopying, recording, or otherwise, edited or translated, except as permitted under the terms of the copyright, without the prior written permission of PTV AG.

Impressum:

PTV AG

Geschäftsfeld Traffic

Traffic Customerservice

Stumpfstr. 1

D - 76131 Karlsruhe

Tel. +49 721 9651-300

Fax +49 721 9651-562

E-Mail: info.vision@ptv.de

www.ptvag.com

www.ptv-vision.com

Find your local partner:

www.ptv-vision.com/distributors

© 2007 PTV AG, Karlsruhe

26

About this Tutorial

This module is part of the tutorial on the PTV Vision product family by PTV AG. It is designed to assist users of these products by explaining step by step typical workflows and important features within VISUM. In the framework of this Quickstart tutorial these steps are explained in detail.

The tutorial unfolds its full usefulness together with your version-specific manual. In the tutorial you learn which decisions to make and which steps to take. The users manual provides you with information how to take the steps with the program version available.

The text is accompanied by an example referred to at specially indicated points. To enable you to follow the steps described in the tutorial, this example, including other required data, has been stored in its various processing stages on the CD enclosed with this tutorial. At the end of the main text you will find a list of all included data with reference to the text.

You may work through the tutorial using the data on the CD. If you want to make modifications and carry out the tutorial examples, we recommend making a copy of the complete CD contents in a directory on your computer. If you work with VISUM, first set the project directories on the enclosed folders entitled VISUM_NETWORKS for version files and ADDITIONAL_DATA for all other file types. To do so choose FILE + PROJECT DIRECTORIES from the menu bar and open the file PATHSETTINGS.PFD. The version files can be opened with VISUM version 10.0 and higher, even if the network size exceeds your license. In this case you may open the version files and follow the examples, but saving of changed data will not be possible. For executing the next example you need to refer to the subsequent version file.

The editorial staff of the PTV Vision tutorials hopes that you enjoy an interesting and instructive read!

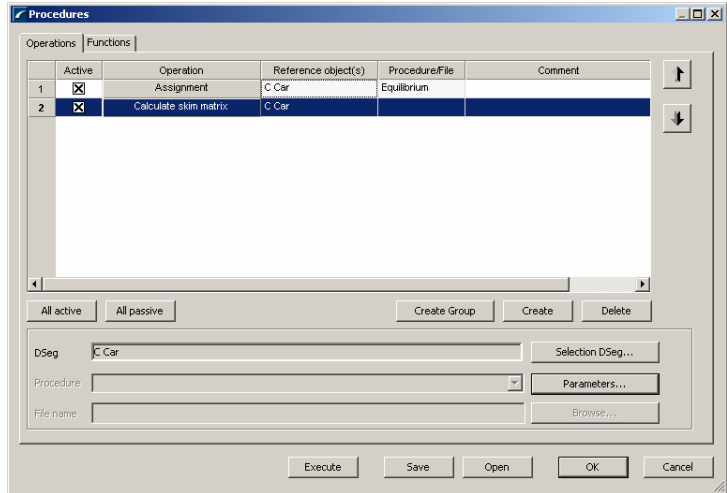
Contents

1	Structure of the Quickstart tutorial	7
2	Private Transport (PrT): Impacts of a new beltway	8
2.1	Creation and attribution of network objects	9
2.2	Inserting travel demand	24
2.3	Assigning travel demand to the network	30
2.4	Analysing the project network	38
3	Public Transport (PuT): Optimizing a bus network	45
3.1	Analysing the existing line network	46
3.2	Adding demand for PuT	50
3.3	Assignment and indicator calculation	56
3.4	Analysing PuT-supply quality	65
3.5	Improving PuT quality	80
3.6	Comparing the actual and planned bus network	88
	Index of example data	94

Executing the procedures

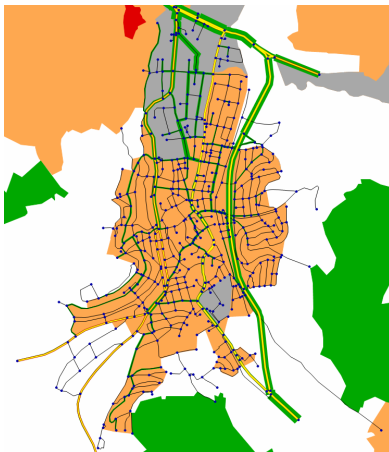
Execute the assignment and the skim matrix calculation:

1. Make sure that both operations are active in the *Procedures* dialog:



2. Press the EXECUTE button in the *Procedures* dialog.

After the calculations are finished, VISUM returns to the network editor window. The assigned volume (Attribute **VolVehPrT**) is displayed as green link bars with widths relative to the volume.



E

You can find this snapshot of the model in the file 407_VISUMTUTORIAL.VER.