

Press Release

New: Transport route planner with TÜV-certified emissions calculation

map&guide professional certified by TÜV Süd

Karlsruhe, Mai 3, 2010. A seal of approval for sustainability: TÜV Süd, a recognized German inspection authority, has certified for the first time a software-based emissions calculator. Consequently, the route planner map&guide professional 2010 now includes the first emissions calculator with a seal of approval awarded by an independent body. All those who must or want to calculate emissions can now use an independent tool.

More and more companies are focussing on green logistics and sustainability. This demonstrates their political and environmental responsibility and is one of the reasons why both political institutions and industry are demanding more and more frequently and vehemently to introduce a standardised emissions calculation. As published late April in the study "Transport Industry Compass 2010" on CO₂ balancing by Steria Mummert Consulting and the F.A.Z. Institute, more than every fourth company [...] asks their transport operators to provide a document as evidence of the CO₂ emissions of their vehicles by 2012."

But, what will be the basis for the calculation? The transport industry has been discussing this topic for many years. A standard by the German Institute for Standardization (DIN) is not planned before 2012. However, it is not possible to calculate precise emission values or provide reliable quotes on carbon-neutral transports without a standardised calculation based on reliable data. Moreover, there is no basis for a comparison of emission rates.

But fortunately, a new standard has been defined: thanks to the certified emissions calculation in map&guide professional 2010, logistics companies can now rely on emission rates that are verified and certified by an independent body.

Pioneer in green logistics software

As a pioneer in emissions calculation, PTV has already integrated a route-

based emissions calculator into its transport route planner since 2009. Built-in emissions reporting allows the user to calculate route-based pollutants for each transport run. Since March 2010, the data has been based on the updated HBEFA 3.1 version (Handbook Emission Factors for Road Transport), the standard reference issued by the German Federal Environmental Agency. The data, which is based on detailed information provided by the national Environmental Agencies, can be used for transport planning throughout Europe. Also, users can directly offset their CO₂ emissions by means of climate certificates during the planning process.

PTV partners with Tricorona AB and the Swiss Foundation myClimate who are leading forces on the voluntary market for carbon offsetting. Both organisations see to it that offset fees are invested in climate protection projects that conform to Kyoto Protocol guidelines. In addition to the emissions report, the freight operator receives an e-mail or letter containing the official offset certificate for each trip planned in map&guide. It certifies that the fee for the carbon-neutral transport has been paid.

TÜV Süd has awarded the seal of approval for the following features: "Validated emission values for road transport of heavy goods," "Designed for the issuance of emission certificates" and "Verified basis for CO₂ offsetting". Furthermore, the software development process has been certified in order to guarantee quality assurance.

Stephan Ruppert, PTV Product Manager, concludes: "It is a big leap forward in independent and reliable CO₂ reporting. With the TÜV-certification, map&guide now provides the required standard for the transport sector."

3,643 characters. Author's copy kindly requested.

map&guide professional

With over 50,000 business users, the map&guide professional route planner leads the market in Germany and the Benelux countries. map&guide professional is the first transport route planner which calculates CO₂ and other pollutant emissions on the basis of routes. It enables transport operators to offset carbon emissions and to acquire climate certificates.

New features in version 2010:

- ▷ Link to Teleroute's freight exchange
- ▷ Precise journey times with driving patterns
- ▷ API (Application Programming Interface) to link the tool to other applications
- ▷ Accounting for permanent roadworks and closures
- ▷ Reliable, route-related calculation of emissions based on HBEFA 3.1
- ▷ Toll for passenger cars in Slovakia and Latvia
- ▷ More meaningful vehicle profiles

For more information, please visit www.mapandguide.com.

Your contact for further information:

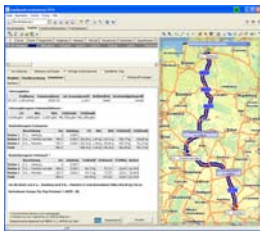
Internet: www.ptvag.com
E-mail: logistics@ptv.de

Kristina Stifter, Vice President Corporate Communications
Phone: +49-721-9651-565, Fax +49-721-9651-684, kristina.stifter@ptv.de
PTV Planung Transport Verkehr AG
Stumpfstr. 1, 76131 Karlsruhe
Download of press material and images: www.ptvag.com, section: News - Press

Images



(Prüfsiegel.jpg) map&guide professional 2010 - the first TÜV-certified transport route planner.



(emissionsberechnung_mg2010.bmp) New: TÜV-certified calculation of emissions with map&guide professional 2010.



(vorfahrt_umwelt.jpg) Environment comes first - the TÜV-certified and standardised emissions reporting by map&guide enables transport operators to provide a CO₂ emissions certificate required by a growing number of companies.

PTV Planung Transport Verkehr AG

The PTV Group provides cutting-edge software technology and consulting to enable customers to meet their mobility needs. It helps people plan and manage traffic and transportation, provides them with the latest traffic reports and assists them in optimising their long-term resource allocation. Since 1979, the independent corporate group has been a leading provider of products and solutions for travel, traffic and transportation planning.

Strong international demand has fuelled dynamic growth: We currently have over 700 employees worldwide crafting innovative solutions for our customers in the public and private sectors. Our Karlsruhe headquarters acts as a development and innovation centre with tight links to research and educational institutions. We additionally maintain shareholdings and subsidiaries in Germany, Europe and every continent in the world.

In the Traffic Software, Transport Consulting and Logistics Software business fields, PTV technology forms the foundation of a host of brand-name products and our own leading map&guide and PTV Vision product lines.

PTV. The transportation experts.