

## Press Release

### New Software Components for Route and Trip Planning

[PTV to launch new versions this spring](#)

**Karlsruhe, January 14, 2010. Simply do it yourself - not only DIY lovers, but also software developers are pleased when their self-made projects are successful and both time and money are saved. With PTV's unique software components specifically designed for developers they can quickly integrate geographical and logistical services into existing web or desktop applications. The new versions will be available as of spring 2010. Developers can immediately use code samples including source codes for their applications, such as routing with the emissions calculator and environmental zones, traffic information and travel times or the brand-new and extremely fast routing method.**

PTV's developer components enable users to enhance their software with useful logistical or geographical functions without spending much time or money. The Karlsruhe-based provider of trip planning software, such as map&guide and PTV Intertour, has been specialising in the logistics sector for more than three decades and therefore knows the requirements of modern logistics. Developers can benefit from the company's expertise which has also been applied to the new versions of its software components. They will be launched in spring 2010.

The modular toolbox for PTV's xServers based on SOAP/XML enables developers to create web-based applications and to easily integrate new functions into existing architectures, such as ERP or CRM systems. If the tools are used consistently, they will pay off quickly: because every kilometre or mile not driven helps to reduce costs. All components can be easily upgraded thanks to their modular and scalable structure.

The PTV MapServer allows users to integrate digital maps, route calculations or other geo-functionalities into their desktop applications. The map server provides all functions of the route planning software map&guide designed for developers. This turns it into one of the most comprehensive software development kits for geographical and logistical applications

currently available in the market.

**New: For environmentally aware organisations**

As of April, routing with emissions calculation and environmental zones will also include altitude profiles - because a truck which is driving down a hill produces lower carbon emissions than a truck driving up a steep hill. This function is made for organisations whose customers are committed to reducing CO<sub>2</sub> and need to prove it or want to strengthen their market position as an environmentally aware organisation.

**New: For inquisitive minds**

Everyone knows that speed and congestion patterns on roads vary according to the time of day. However, standard traffic information services do not take this fact into consideration. PTV goes one step further and offers travel information based on the time of day. This is of particular interest to those who wish to offer traffic information that goes beyond normal services, meaning reliable travel times being calculated at the same time. This information is essential for time-sensitive transports with strict delivery times. As the software takes time-based traffic information, so-called time graphs, into account, it helps drivers to calculate the optimal departure time. Dynamic routing also considers current traffic incidents.

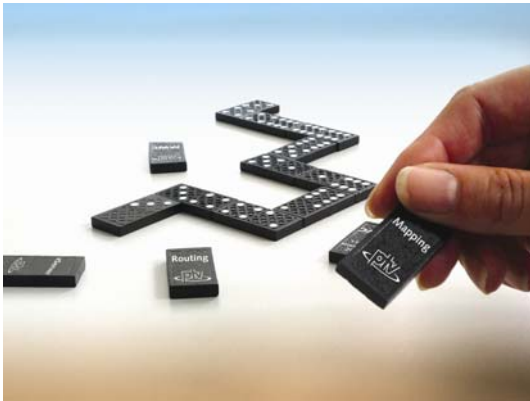
**New: For urgent issues**

Good news for companies that offer trip planning services: the distance matrix is an essential part of trip and route planning. Until now, it has been difficult and time-consuming to calculate this matrix. Thanks to a new technology it is now possible to considerably improve computing speed. As a result, dispatchers have a lot more time to re-calculate and optimise their trips and routes, which finally leads to improved results and reduced costs. And, of course, satisfied customers.

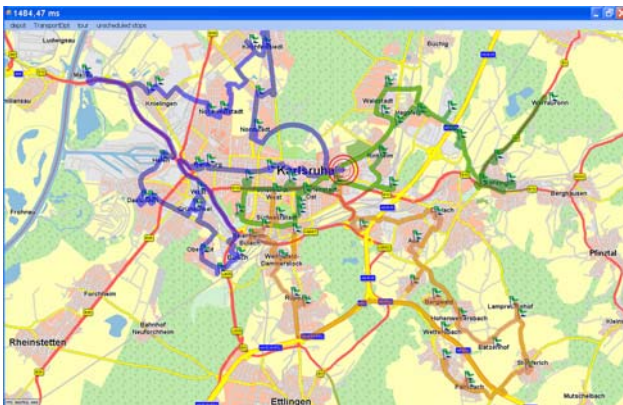
For more information about the upgrades, contact PTV at [developer@ptv.de](mailto:developer@ptv.de).

3,932 characters. Author's copy kindly requested.

## Images



(Dominosteine.jpg) Simply do it yourself – with PTV's software components



(Tour-3vehicles balanced.png) The new software component PTV xTour Server optimises the route sequence and the vehicles used for each trip.

### PTV xServer

With PTV xServers you can integrate geographical and logistical functions into your company's IT structures, mobile solutions, web applications and other Client-Server architectures. You can choose the following xServers:

- ▷ PTV xLocate Server: geocodes postal addresses, offers reverse geocoding and address validation.
- ▷ PTV xMap Server: displays routes and objects in various formats on the map with numerous zoom and pan functions.
- ▷ PTV xRoute Server: calculates routes, distances, driving times, road toll and catchment areas.
- ▷ PTV xSequence Server: optimises the sequence of pickup and delivery stops within a transport run.
- ▷ PTV xDima Server: calculates distance matrices (driving times and routes) between different locations.
- ▷ PTV xCluster Server: creates homogeneous groups of customers or customer calls, e.g. to ensure optimum workload of the mobile workforce.
- ▷ PTV xTour Server: optimises trips to ensure efficient vehicle management.

For more information visit <http://www.ptvag.com/software/developer-components/products/ptv-xserver/>

### PTV MapServer

The PTV MapServer allows companies to integrate numerous digital maps, routing and other geographic functionalities into their desktop software:

- ▷ Up-to-date and house-number exact maps (Europe)
- ▷ Exact geocoding of addresses and POIs
- ▷ Easy import and administration of addresses and company data

- ▷ Pan-European route calculation including toll calculation
- ▷ Route calculation takes road closures or specific road categories into consideration
- ▷ Drawing objects, locations, etc. on the map
- ▷ Geographic radius search
- ▷ Displaying GPS vehicle positions

For more information visit <http://www.ptvag.com/software/developer-components/products/ptv-mapserver/>

**Contact:**

www.ptvag.com

E-mail: logistics@ptv.de

Kristina Stifter, Corporate Communications Vice President

Tel.: +49-721-9651-565, Fax: +49-721-9651-684, kristina.stifter@ptv.de

PTV Planung Transport Verkehr AG

Stumpfstr. 1, 76131 Karlsruhe

Download of press releases and images, go to [www.ptvag.de](http://www.ptvag.de), Section: News-Press

**PTV Planung Transport Verkehr AG**

The PTV Group provides cutting-edge software technology and consulting to enable customers to meet their mobility needs. It helps people plan and manage traffic and transportation, provides them with the latest traffic reports and assists them in optimising their long-term resource allocation. Since 1979, our independent corporate group has been a leading provider of products and solutions for travel, traffic and transportation planning.

Strong international demand has fuelled dynamic growth: We currently have over 700 employees worldwide crafting innovative solutions for our customers. Our Karlsruhe headquarters acts as a development and innovation centre with tight links to research and educational institutions. We additionally maintain shareholdings and subsidiaries in Germany, Europe and on every continent in the world.

In the Traffic Software, Transport Consulting and Logistics Software business fields, PTV technology forms the foundation of a host of brand-name products and our own leading map&guide and PTV Vision product lines.

PTV. The transportation experts.