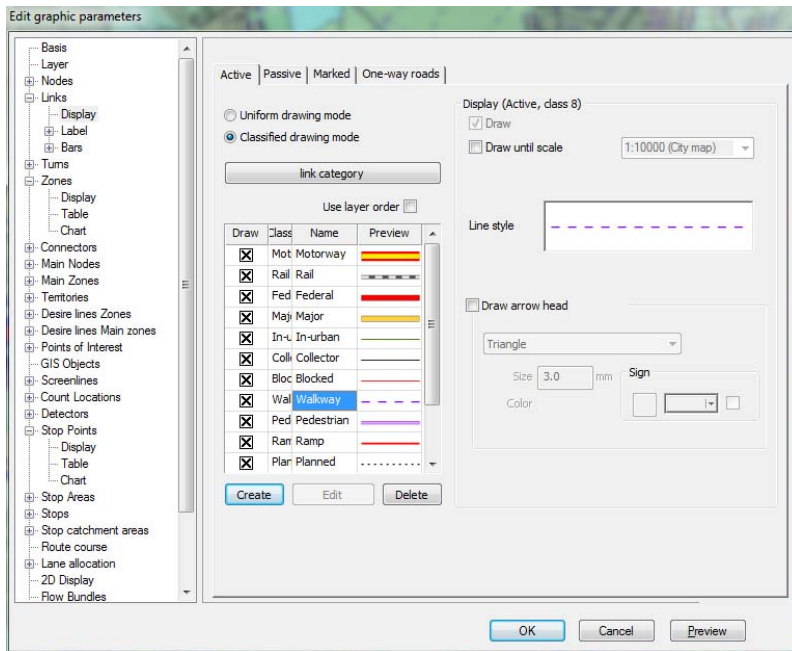
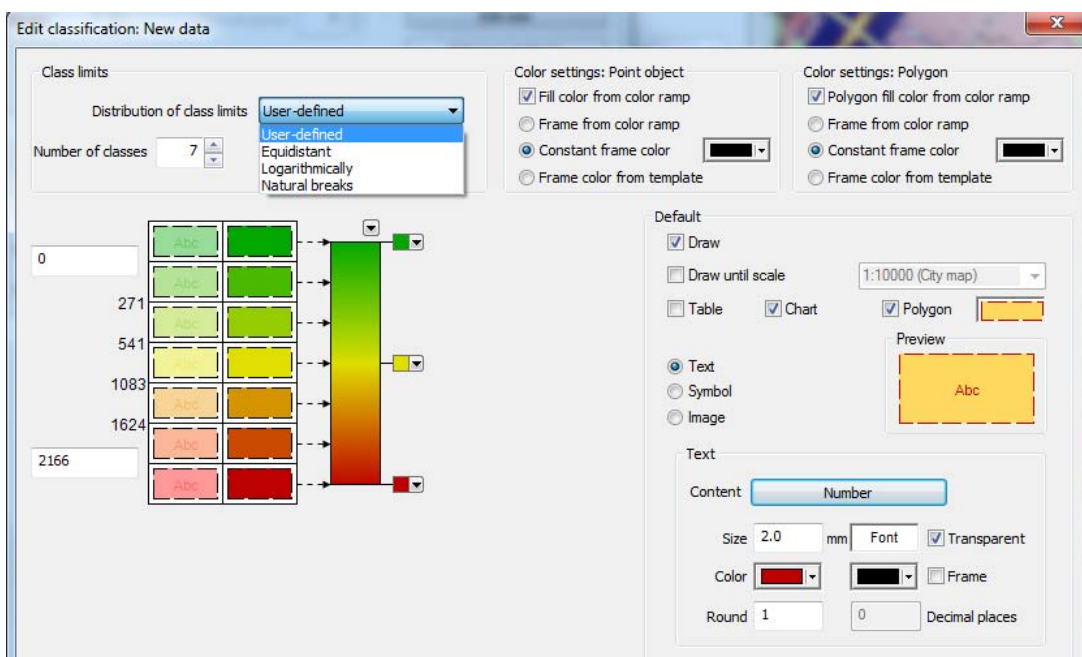


# Graphics Parameters

The new release includes a complete overhaul of the dialog for setting up classifications, an important ingredient for thematic maps. First of all, each main graphics parameters page for a network object contains a preview of the visual appearance of the network object for each class.



For all point-like and area-like objects the Edit button below the classification grid brings up a new dialog for setting up a new or modifying an existing classification.



With this dialog you can:

- ▶ Modify selected properties (e.g. the label attribute) for all classes without resetting the others (e.g. class limits or colors),
- ▶ Quickly set class limits according to alternative rules, e.g. logarithmically instead of equidistant,
- ▶ Set up beautiful color ramps (with instant preview) using a very intuitive ramp tool as seen in professional graphics editors.

This is just the beginning of a thorough modernization of the Graphics Parameters dialog.

In addition there are several smaller improvements to the graphics parameters:

- ▶ Column charts now also accept negative attribute values, which then display downward from the baseline of the chart.
- ▶ Using a new option under Links – Bars you can force the drawing of link bars for closed links (for which they used to be suppressed automatically).