

PTV offers a new map technology that has been optimized for use in web applications and internet portals: PTV Vector Maps. The new technology, based on scalable vector images, ensures that maps are displayed very quickly, and allows any map navigation function in no lag of time, like seamless zooming or panning. It also provides a high degree of interactivity. Moreover, PTV permits many individual configuration options to the integrator.

PTV Vector Maps



Features of PTV Vector Maps

- ▶ Vector maps allow interactive map navigation – seamless and without interruption
- ▶ Fast zoom and move functions, e.g. panning, rectangular zoom, “balloon flight” (rapid zoom out/zoom in over selected point) or rotating
- ▶ Simple distance calculations per mouse-click on two points of the map
- ▶ Interactive overview map
- ▶ Scalable map data ensures up-to-date maps at any time thanks to easy update
- ▶ Supported by all common browsers
- ▶ Various options regarding layout, signing and hosting are available for service providers

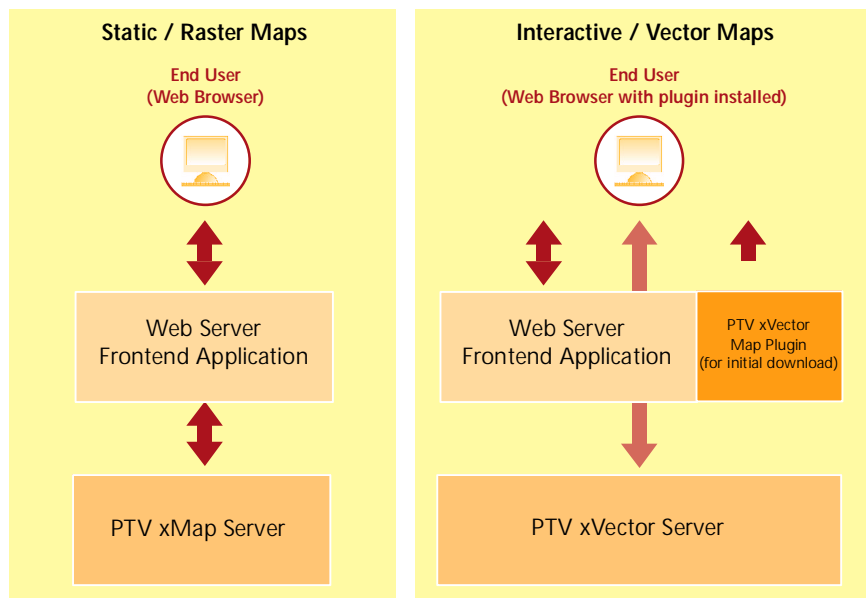
How PTV Vector Maps work

PTV Vector Maps are provided by two separate software components, a server and a browser plugin: The rendering of the map images is done on the client side by PTV xVector Map Plugin and is based on vectorial data delivered from PTV xVector Server.

Initially the end-user has to download the plugin and install it on his PC. This means that service providers and portal operators will probably want to integrate a download

link within their web-application in order to provide the plugin for download. As soon as the plugin has been downloaded by the end-user, displaying PTV Vector Maps is possible, including all features mentioned above.

PTV's scalable map architecture enables the maps to be dynamically and selectively updated and supplemented - an excellent basis to easily implement all types of customised services.



Integration

PTV xVector Map Plugin is a browser plugin that is supported by all common browsers:

- ▶ Internet Explorer from 5.0
- ▶ Mozilla Firefox
- ▶ Netscape

When accessing the server, the end-user is always automatically provided with the latest available plugin version.

PTV delivers an extensive SDK, which makes the already easy and quick integration of the plugin on the service provider's side even more comfortable.

For the two software components (server and plugin) there are several hosting options. PTV will be happy to give advice.

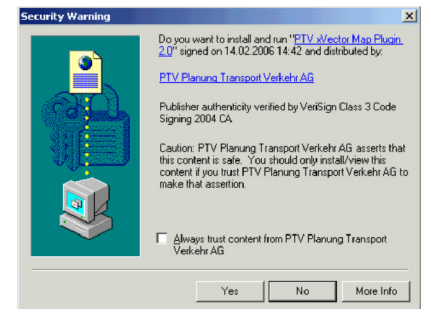
Individual map designing

There are also many pre-configured map profiles so you can create the look&feel you need: Choose between various options for colours, texture, line thickness or freely selectable icons that help you to easily design your individual map. Of course you can show your own POI-icons or your logo on the maps as well.

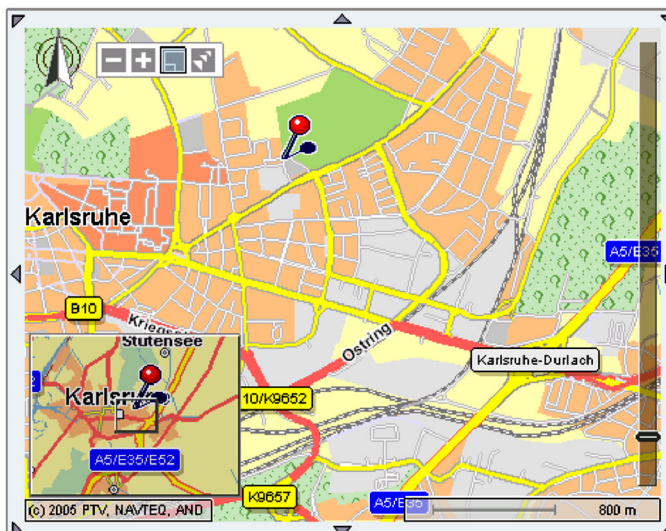
Thanks to an intelligent interaction concept the included objects remain selectable and can be used for further activities, such as displaying information via mouse-over effect.

Individual signing and branding

PTV offers a special opportunity: You can sign and brand PTV Vector Maps to your own need. Therefore you can choose between two options: You may want to work with the PTV-signed plugin which is also PTV-branded. Alternatively you may decide to sign and brand the plugin by yourself, so the end-user will get the impression of downloading software provided by your service, portal etc.



Download message



Interactive map navigation

Expanding options

PTV Vector Maps are available for all common maps, worldwide, and can easily be combined with all sorts of software products, applications and services offered by PTV. You may want to include services like routing, traffic information or geocoding. Use PTV MobilityPlatform to develop mobility services in an easy and sustainable manner!

Test PTV xServers free of charge!
Just contact us at mobility@ptv.de.