

Press Release

Hands-on Traffic Management

PTV presents innovative ITS application at TRB's 89th Annual Meeting

Karlsruhe/Washington, January 8, 2010. PTV will be showcasing an exciting ITS application at this year's TRB Annual Meeting in Washington. Attendees will have the unique opportunity to discover hands-on traffic management solutions and the latest PTV Vision software developments designed to support sustainable transportation planning and natural resources conservation.

For its strategic partner Mygistics, transportation experts from PTV are currently developing a large-scale transportation model for the greater Chicago/Milwaukee area. The PTV TrafficPlatform uses this model combined with online data for the calculation of traffic volumes and forecasts. Because this is a complete network solution it can help us to avoid traffic jams, making better use of alternative routes which better utilize existing infrastructure and help to protect our environment.

The experience gained from the Validate traffic model implemented in Germany is now being applied to a transportation network in North America. Another novelty is the use of the simulation software VISSIM as traffic management laboratory. VISSIM is used to generate traffic data which is normally provided by a traffic management center. In this way, it is possible to provide online processes with genuine input data for data completion and forecast, which enables analysis of all kinds of traffic scenarios. The results of the procedure are immediately compared with the simulation data calculated in VISSIM. The traffic management laboratory significantly contributes to quality assurance of existing and new procedures.

An important section of Chicago's road network has been selected for the presentation. The dynamic development of Chicago's traffic flow at different times of day and the impact of traffic control on the traffic flow will be displayed using the traffic management laboratory. So, TRB attendees will have the unique opportunity to experience the added value of the model-based approach for enhancing real-time and predictive traffic information.

Meet PTV at TRB, stand# 1200 – PTV’s transportation experts are already looking forward to unveiling its latest product developments.

2558 characters incl. blanks. Author’s copy kindly requested.

For more information about PTV’s product highlights presented at TRB and the partnership between PTV and Mygistics, visit the website <http://www.ptvag.com/index.php?id=1699>.

Background information:

More information about the PTV TrafficPlatform:
<http://www.ptvag.com/index.php?id=1517>

More information about VISSIM:
<http://www.ptvag.com/software/transportation-planning-traffic-engineering/software-system-solutions/vissim/>

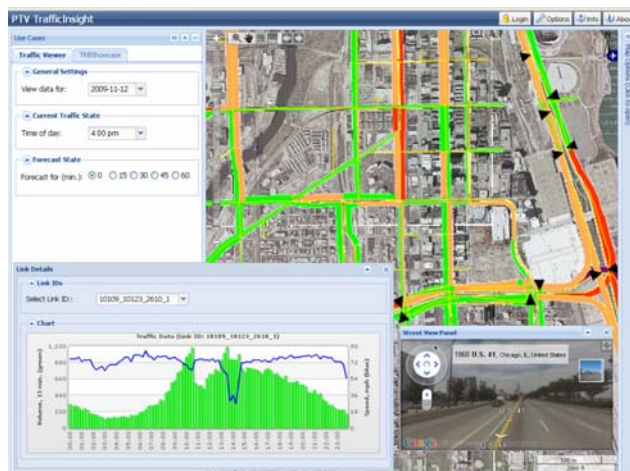
Images:

Go to <http://www.ptvag.com/company/news/press/images-and-photos/> and select the Traffic tab, if you wish to download images.



File: ITS_Modell_Chicago.jpg

ITS application: Large-scale transportation model for the greater Chicago/Milwaukee area



File: TRB_Showcase_Screenshot-3.bmp

Based on PTV technology: ITS web application for traffic states and traffic forecasts.

For more information please contact:

Internet: www.ptvag.com / www.ptvamerica.com

Kristina Stifter, Vice President Corporate Communications
Phone: +49-721-9651-565, Fax +49-721-9651-684, kristina.stifter@ptv.de
PTV Planung Transport Verkehr AG
Stumpfstr. 1, D-76131 Karlsruhe
Download of press releases and images: www.ptvag.com, Category: News-Press

PTV Planung Transport Verkehr AG

The PTV Group provides cutting-edge software technology and consulting to enable customers to meet their mobility needs. It helps people plan and manage traffic and transportation, provides them with the latest traffic reports and assists them in optimising their long-term resource allocation. Since 1979, our independent corporate group has been a leading provider of products and solutions for travel, traffic and transportation planning.

Strong international demand has fuelled dynamic growth: We currently have over 700 employees worldwide crafting innovative solutions for our customers. Our Karlsruhe headquarters acts as a development and innovation centre with tight links to research and educational institutions. We additionally maintain shareholdings and subsidiaries in Germany, Europe and every continent in the world.

In the Traffic Software, Transport Consulting and Logistics Software business fields, PTV technology forms the foundation of a host of brand-name products and our own leading map&guide and PTV Vision product lines.

PTV. The transportation experts.

www.ptvag.com

www.ptvamerica.com